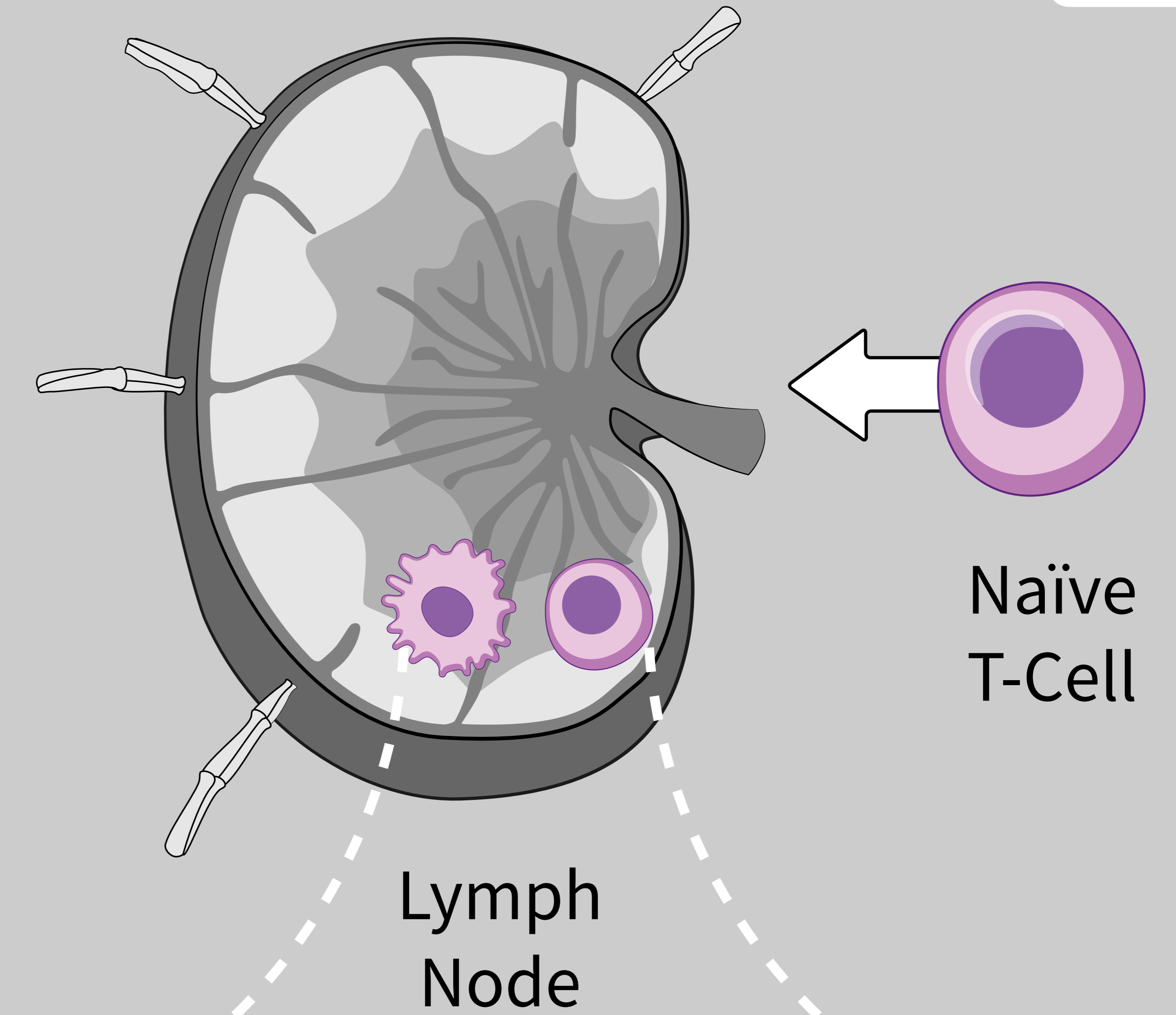
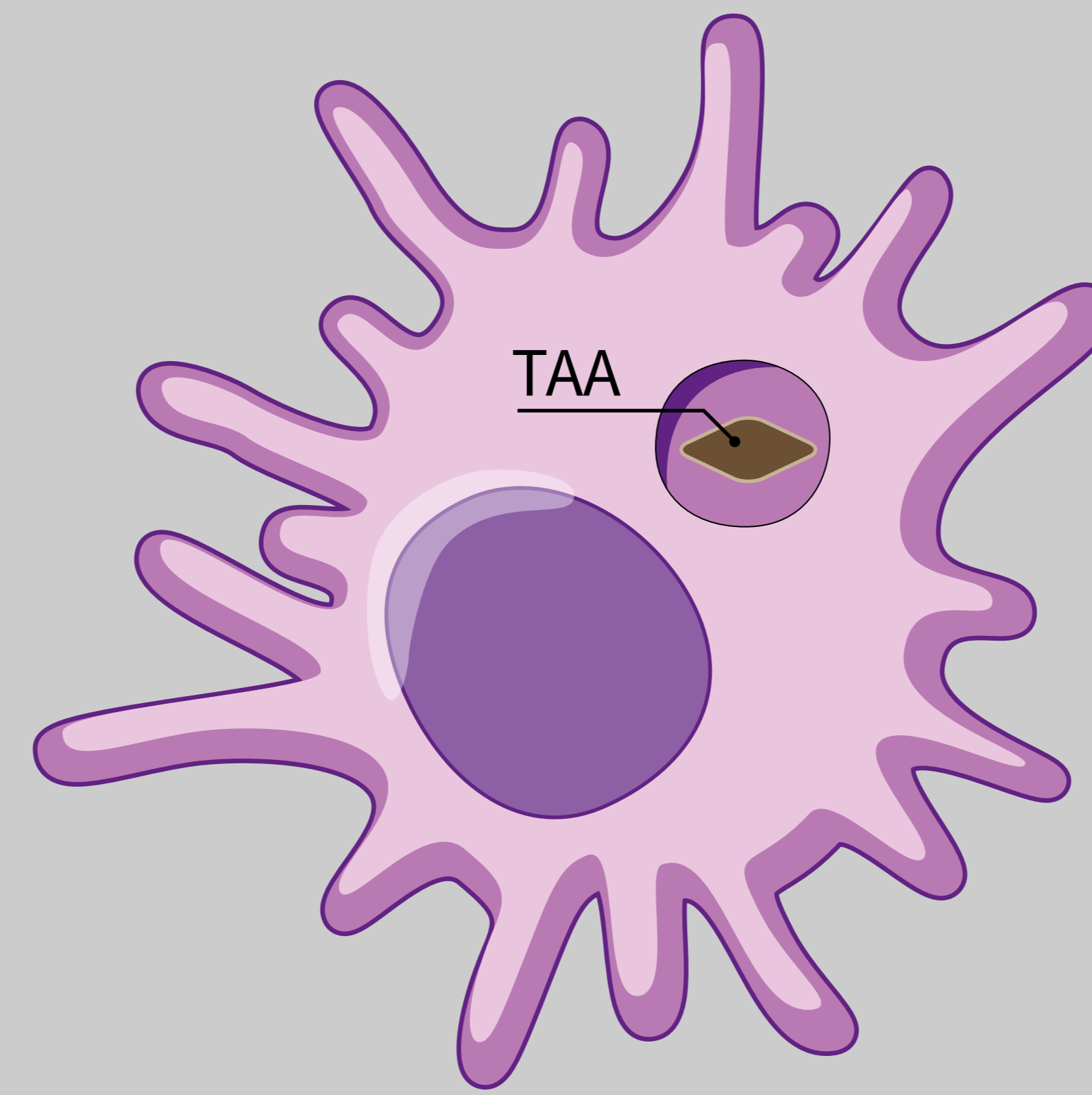
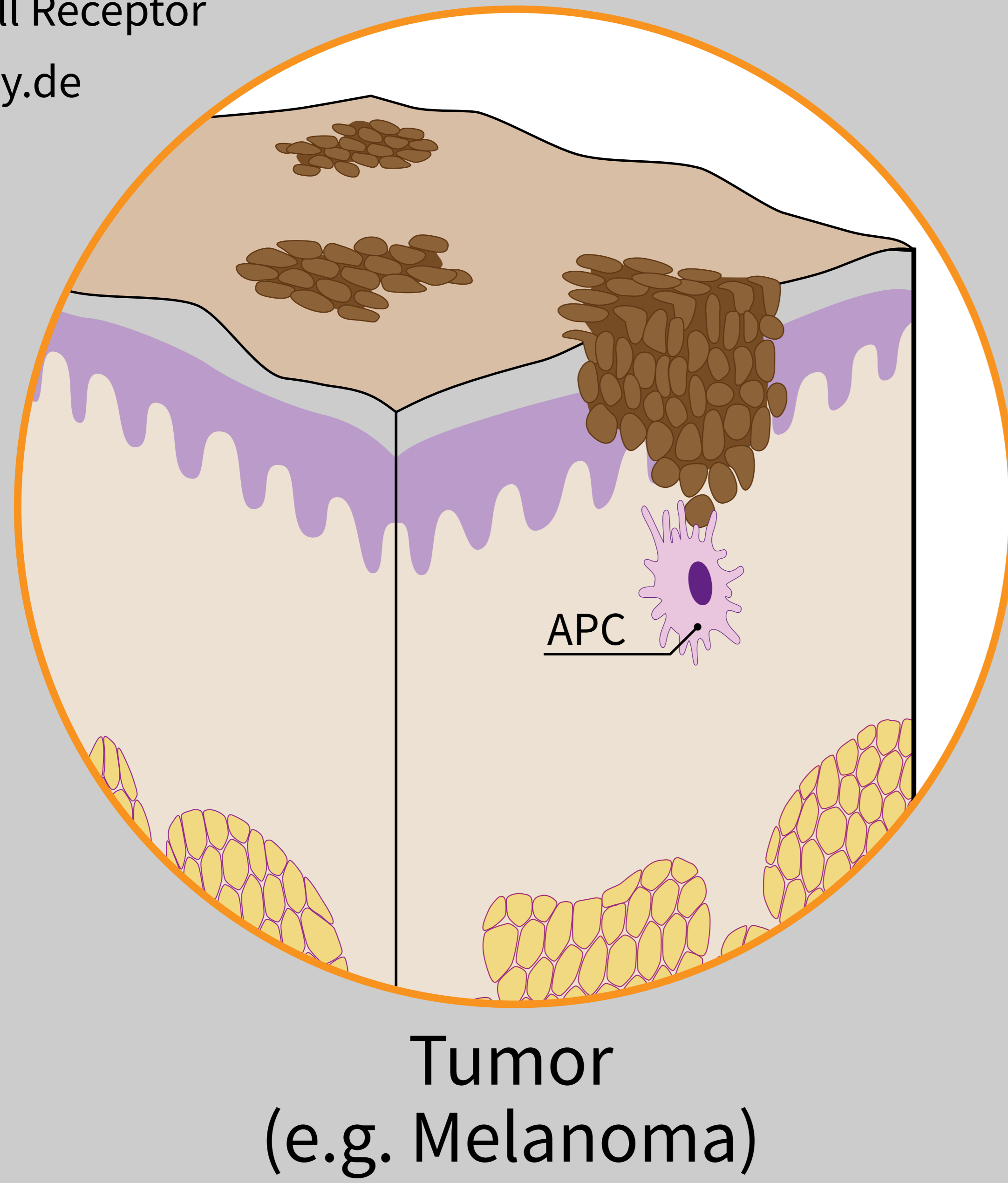
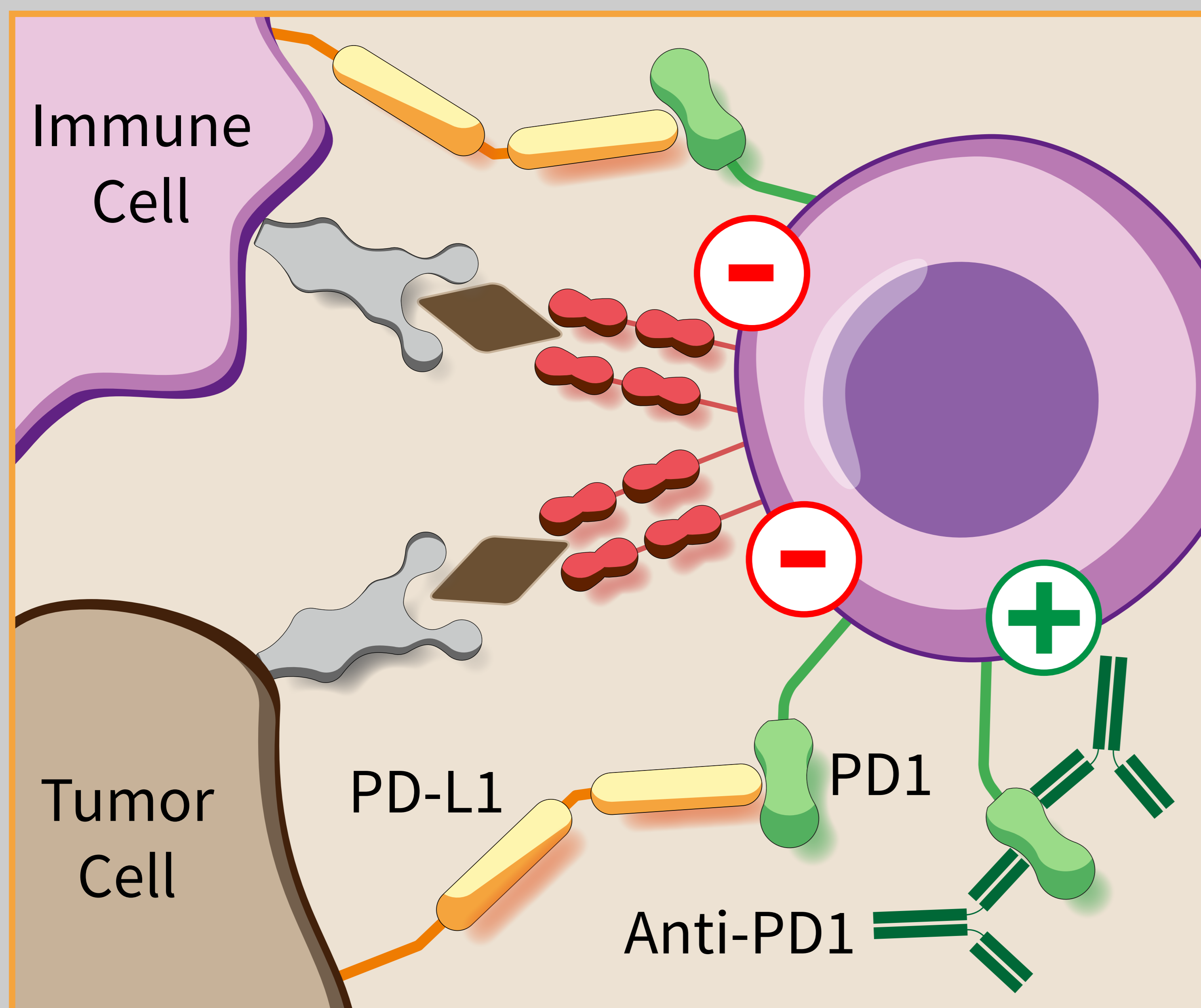


Cancer Therapy by Inhibition of Negative Immune Regulation (CTLA4, PD1)

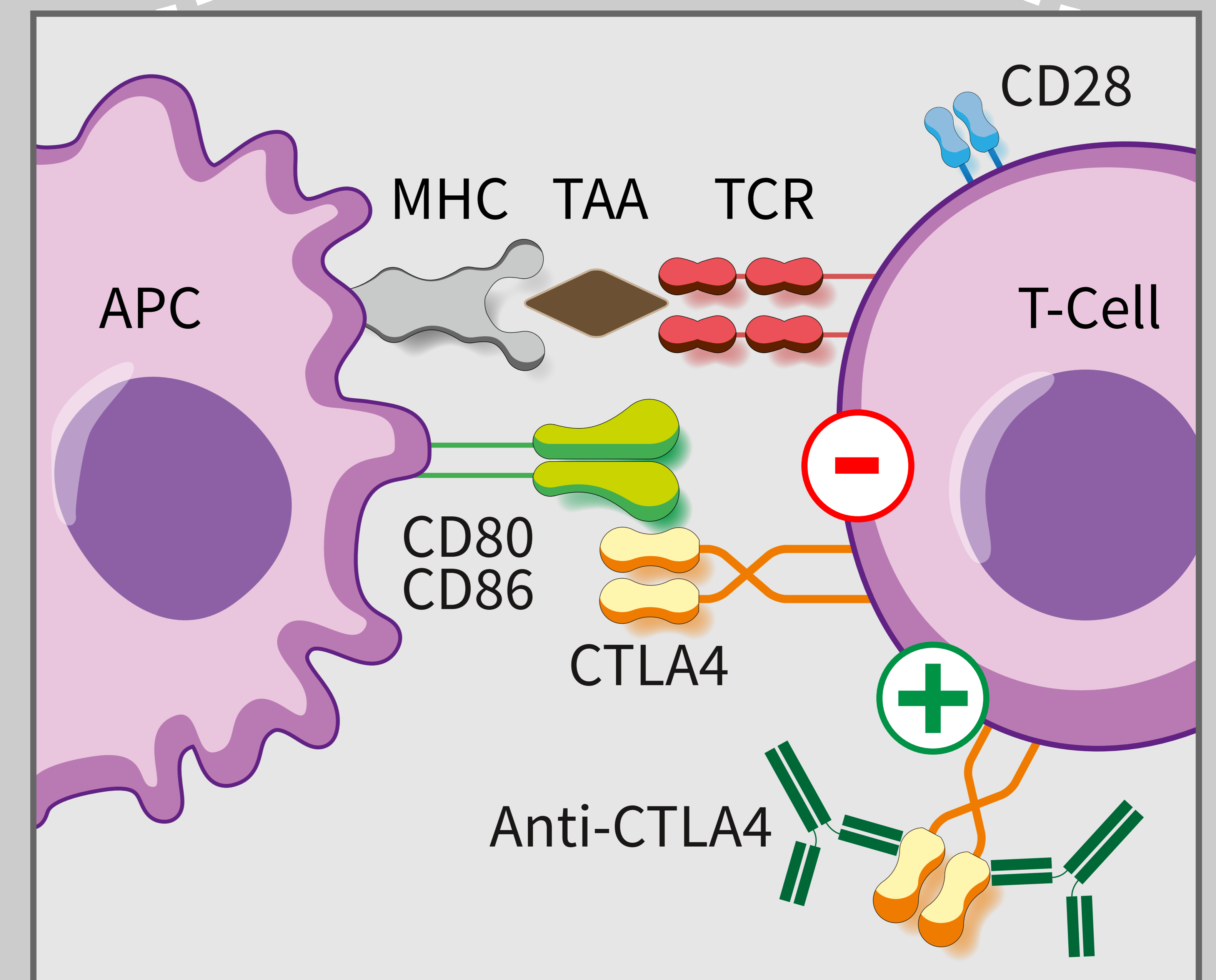
APC – Antigen-Presenting Cell
TAA – Tumor-Associated Antigen
TCR – T-Cell Receptor
www.hegasy.de



T-Cell Migrates to
Tumor Tissue



Tumor Microenvironment



T-Cell Priming